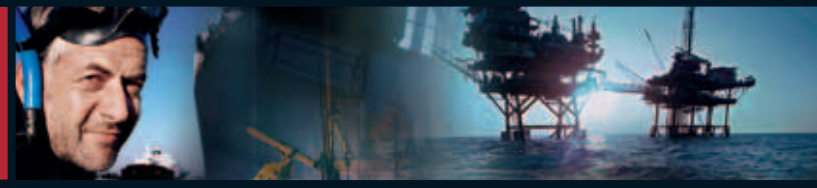


JDN LOW HEADROOM TROLLEYS



J. D. NEUHAUS
powered by air!

JDN LOW HEADROOM TROLLEYS



The trolley solution for restricted headroom areas. Carrying capacities: 0.5 t to 6.3 t standard, larger sizes upon request

Where headroom is restricted and standard trolleys can't meet the lifting height requirements we recommend **JDN Low Headroom Trolleys** whereby our air hoists are horizontally mounted. When only very low headroom is available we recommend JDN Ultra-Low Monorail Hoist design.

Standard Features

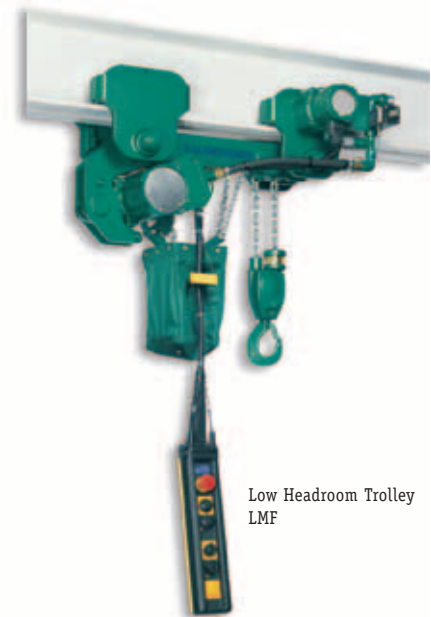
- Small number of maintenance/wear free moving parts
- No additional motor lubrication required
- Optional 2-speed travelling speed
- Adjustable trolley widths to suit your requirements

Special Features

- In special KRV design
- Extended trolley tie bars for bulky or elongated loads

Technical Data

Hoist Type		PROFI 05 TI	PROFI 1 TI	PROFI 2 TI	PROFI 3 TI	PROFI 6 TI
Trolley Type		LMF 05-2 t	LMF 05-2 t	LMF 05-2 t	LMF 3.2 t	LMF 6.3 t
Carrying capacity	mt	0.5	1	2	3.2	6.3
Number of chain strands		1	1	2	1	2
Motor output Hoist	kW	1	1	1	3.5	3.5
Motor output Trolley	kW	0.2	0.2	0.2	0.2	0.2
Air pressure	PSI	85	85	85	85	85
	bar	6	6	6	6	6
Lifting speed at full load	ft/min	32.81	16.40	8.20	14.76	7.21
	m/min	10	5	2.5	4.5	2.2
Lifting speed without load	ft/min	55.77	32.81	16.40	29.52	14.76
	m/min	17	10	5	9	4.5
Lowering speed at full load	ft/min	55.77	36.09	18.04	35.43	17.72
	m/min	17	11	5.5	10.8	5.4
Travelling speed at full load	ft/min	29.53*/45.93	29.53*/45.93	29.53*/45.93	29.53*/45.93	29.53*/45.93
	m/min	9*/14	9*/14	9*/14	9*/14	9*/14
Air consumption at full load - lifting	cfm	42.38	42.38	42.38	141.26	141.26
	m ³ /min	1.2	1.2	1.2	4	4
Air consumption at full load - lowering	cfm	52.97	52.97	52.97	194.23	194.23
	m ³ /min	1.5	1.5	1.5	5.5	5.5
Air consumption trolley motor	cfm	21.19	21.19	21.19	21.19	21.19
	m ³ /min	0.6	0.6	0.6	0.6	0.6
Air connection		G 1/2	G 1/2	G 1/2	G 3/4	G 3/4
Hose dimension (Ø inside)	inch	1/2	1/2	1/2	3/4	3/4
	mm	13	13	13	19	19
Weight with standard lift and control	lbs	216.05	218.26	231.59	462.97	727.53
	kg	98	99	105	210	330
Chain dimension	inch	0.28 x 0.83	0.28 x 0.83	0.28 x 0.83	0.51 x 1.42	0.51 x 1.42
	mm	7 x 21	7 x 21	7 x 21	13 x 36	13 x 36
Weight of chain	lbs/ft	0.67	0.67	0.67	2.6	2.6
	kg/m	1	1	1	3.8	3.8
Standard lift	ft	10	10	10	10	10
	m	3	3	3	3	3
Length of control at standard lift	ft	6.5	6.5	6.5	6.5	6.5
	m	2	2	2	2	2
Max. bottom flange thickness t	inch	0.98	0.98	0.98	1.38	1.38
	mm	25	25	25	35	35
Max. bottom flange width b	inch	12.20	12.20	12.20	12.20	12.20
	mm	310	310	310	310	310
Min. bottom flange width b	inch	3.15	3.15	3.15	4.92	4.92
	mm	80	80	80	125	125
Noise level at full load ¹ - lifting	dB(A)	75	76	76	78	78
Noise level at full load ¹ - lowering	dB(A)	78	78	78	80	80

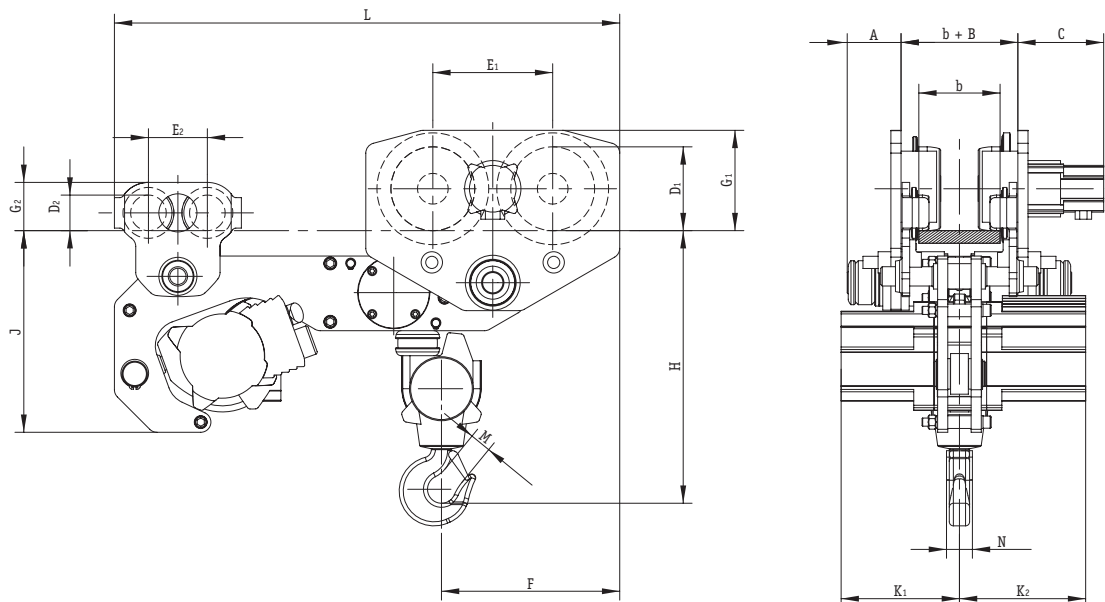


Low Headroom Trolley LMF

*1st step at F-control with 2-step travelling speed, ¹Measured at 1m distance acc. to DIN 45635 part 20



J.D. NEUHAUS
powered by air!



Dimensions

Hoist Type		PROFI 05 TI	PROFI 1 TI	PROFI 2 TI	PROFI 3 TI	PROFI 6 TI
Trolley Type		LMF 05-2 t	LMF 05-2 t	LMF 05-2 t	LMF 3.2 t	LMF 6.3 t
A max.	inch mm	4.13 105	4.13 105	4.13 105	4.13 105	4.17 106
B	inch mm	1.42 36	1.42 36	1.42 36	1.42 36	2.76 70
b min.	inch mm	3.15 80	3.15 80	3.15 80	3.15 80	4.92 125
C	inch mm	6.46 164	6.46 164	6.46 164	6.46 164	6.65 169
D ₁	inch mm	2.76 70	2.76 70	2.76 70	2.76 70	6.50 165
D ₂	inch mm	2.76 70	2.76 70	2.76 70	2.76 70	2.76 70
E ₁	inch mm	4.57 116	4.57 116	4.57 116	4.57 116	9.29 236
E ₂	inch mm	4.57 116	4.57 116	4.57 116	4.57 116	4.57 116
F	inch mm	6.77 172	6.77 172	7.68 195	8.98 228	13.82 351
G ₁	inch mm	3.74 95	3.74 95	3.74 95	3.74 95	7.76 197
G ₂	inch mm	3.74 95	3.74 95	3.74 95	3.74 95	3.74 95
H min.	inch mm	12.60 320	12.60 320	15.51 394	16.34 415	21.14 537
J	inch mm	12.60 320	12.60 320	12.60 320	15.63 397	15.63 397
K ₁	inch mm	5.71 145	5.71 145	5.71 145	9.17 233	9.17 233
K ₂	inch mm	5.98 152	5.98 152	5.98 152	9.76 248	9.76 248
L	inch mm	28.15 715	28.15 715	28.15 715	32.48 825	39.17 995
M	inch mm	1.10 28	1.10 28	1.10 28	1.18 30	1.57 40
N	inch mm	1.65 42	1.65 42	1.65 42	1.65 42	2.01 51
t max.	inch mm	0.98 25	0.98 25	0.98 25	1.38 35	1.38 35